



The Craft Room



THE PIP BAG

Sewing Pattern - The Pip Bag

Welcome to our sewing pattern for The Pip bag - a zipped and lined pouch!



With some simple measuring and cutting of fabrics, plus the insertion of a zip, you can use your sewing machine to create this medium-sized zipped pouch – perfect for storing sewing projects, your current crochet or knitting WIP, or anything else you want.

It has a boxed base, no raw seams and can be made in any combination of fabric colours or patterns you choose. You can also personalise it with a fun trim if you wish.

The finished pouch will measure approximately: 30cm wide, 25cm high and 10cm deep.

To make a pouch of this size you will need:

- Sewing machine with zipper foot
- Thread ([you can find the range of colours here](#)).
- 3 x co-ordinating fabrics (1 fat quarter of each of the outer fabrics, half a metre of the lining fabric. We used the following:
 - [Fabric A - Robert Kaufman - Essex – Linen](#)
 - [Fabric B - Liberty Fabrics - Emily Belle – Caterpillar](#)
 - [Fabric C - Lewis and Irene - Sakura - Tiny Blossom - Pink with Gold Metallic](#)
- Medium-weight iron-on interfacing, half a metre will be plenty. ([Here is the link to the kind we used.](#))
- 36cm plastic zip ([you can find these here](#)).
- Iron and ironing board
- Square quilter's ruler, fabric pen
- Dressmaking scissors, old scissors (for trimming ends of zip)
- Pins/clips

Please note:

- All seam allowances are 1cm.
- Right side (RS) of fabric will be what you want to be seen when the bag is finished. Wrong side (WS) is the back of the fabric.
- If you are using directional fabric (i.e. it matters which way up it is because of the design), please take care to cut your fabric in the correct orientation.

Steps:

1. Cut your fabric pieces to the following sizes:
 - Outside top fabric (A): 17cm x 32cm (cut 2)
 - Outside bottom fabric (B): 18cm x 32cm (cut 2)
 - Lining (C): 32cm x 32cm (cut 2)
 - Interfacing (D): 32cm x 32cm (cut 2)
 - Optional trim: 32cm (2 x pieces)



2. To construct the outer bag pieces, pin/clip A and B with RS together along the 32cm edge. Stitch this seam, with the 1cm seam allowance. Repeat this with remaining pieces A and B.



Step 2: pin/clip A and B



Step 2: stitch A and B

3. If you are adding trim, stitch it into the seams by sandwiching it between A and B (figure 1), or top stitch it along the seams you have just stitched (on the RS) (figure 2).



4. Iron interfacing onto WS of each completed outside bag piece, taking care to orientate it correctly so that the edges match.
5. Keeping the outer front RS up, please zip along top edge, RS down with zipper pull to the left. The zip will be longer than your fabric pieces – it can overhang at either or both sides.



6. Place one of the lining pieces (C) RS down, lining it up along the top and sides of outer bag piece. (*Please see photo on next page.*)



Step 6: line up all bag sections along top.

7. Using your zipper foot, stitch along the top edge, attaching the lining, the zip and the outer bag together, taking care to keep your stitching line straight. Use a smaller seam allowance, being careful not to stitch over the zipper teeth.



8. Then press your outer bag fabric away from the zip.
9. Your zip should now be enclosed between the outer and lining pieces.



10. Increase your stitch length and top stitch along the zip, from RS, through the outer and lining fabric, ensuring both are smooth and straight.



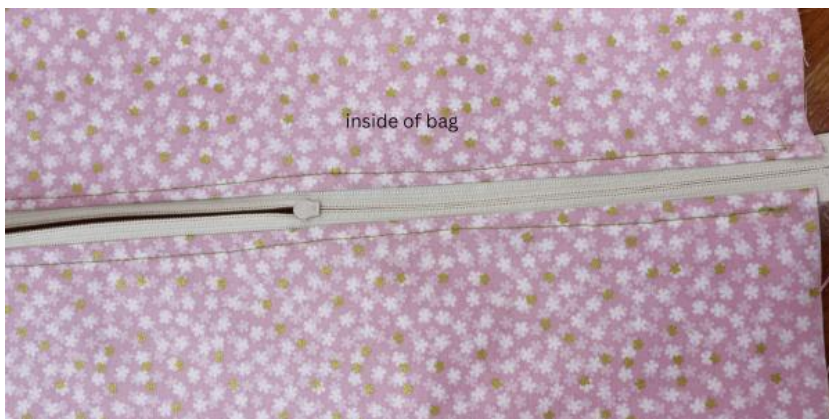


Step 2: top stitch zip

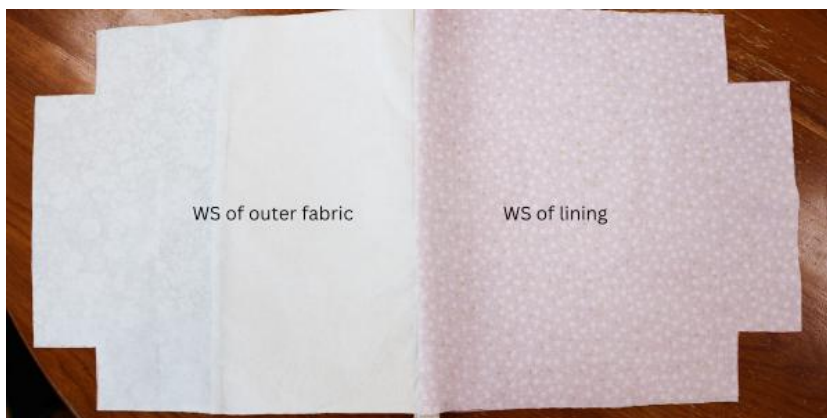
11. To attach the other side of the zip, lay the second lining piece (C) RS up. Then place the outer side of bag with zip attached RS up on top of piece C. Then place remaining outer bag side RS down on top. Ensure that top edges of lining, zip and outer bag pieces match.



12. Using zipper foot, stitch through all layers with small seam allowance. Again, avoid stitching through zipper teeth.
13. Press as before and top stitch this second side of the zip.



14. To make the boxed bottom: use your quilter's ruler to measure and cut a square 5cm x 5cm out of each corner of the outer bag fabric and the lining fabric.



15. Take the 2 outer pieces and the 2 lining pieces, RS together, matching the sides and bottom edges, pin or clip together.



16. Open the zip approximately halfway.
17. Lay your bag so that the zip is horizontal, with the outer bag pieces towards you and the lining laid away from you.



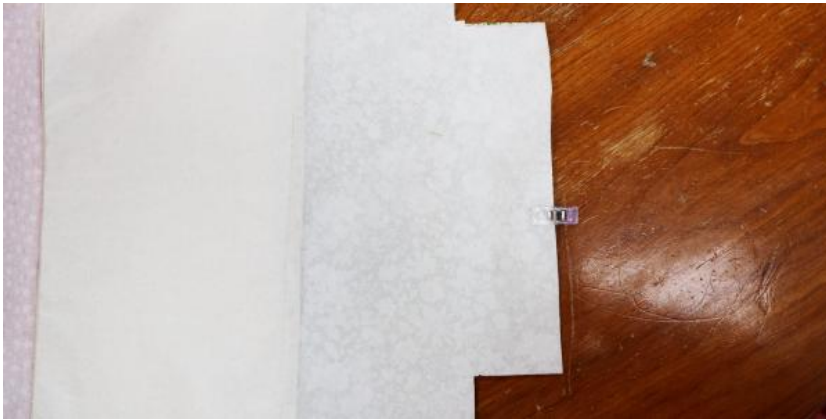
18. Fold the zip in half horizontally, so that the teeth of the zip are pushed towards the outer bag.



19. Beginning at right-hand side of lining, immediately above cut-out square, stitch with seam allowance up to zip and across it, to immediately above the cut-out square on outer bag fabric. Repeat for left-hand side, stitching from cut-out square to cut-out square. Take care and slow down as you stitch over the zip.



20. Then stitch across bottom of outer fabric, from cut-out square to cut-out square.



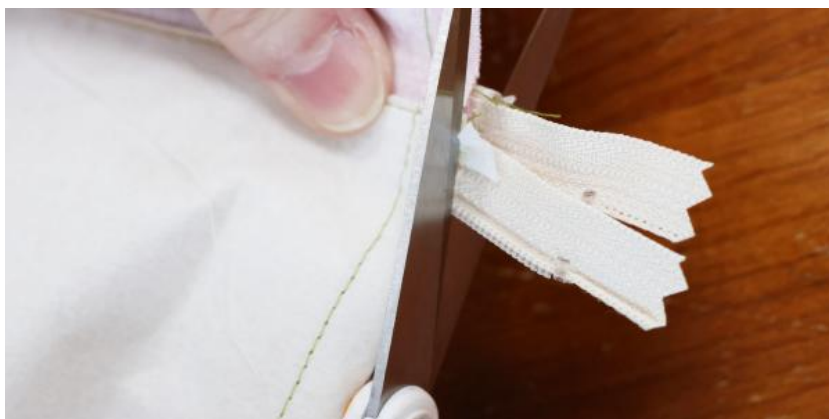
21. For the bottom edge of the lining, stitch together from cut-out square to cut-out square, but leave a gap of approximately 10cm in the middle of your seam. (This is where you will turn the bag RS out, so the gap needs to be big enough for you to reach your hand through.)



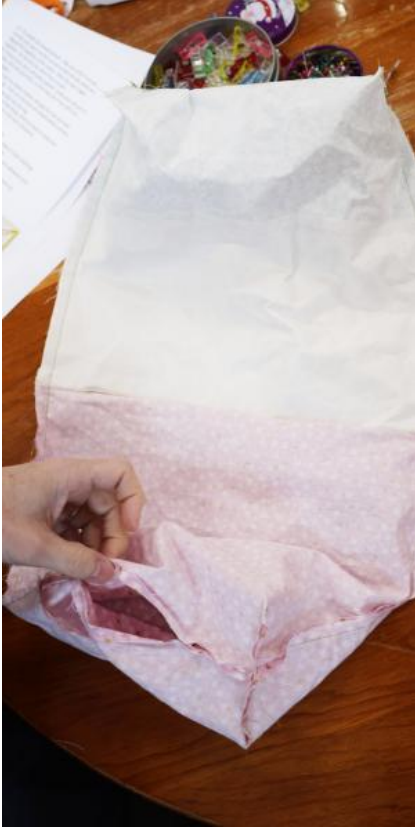
22. To create the boxed bottom: take one of the 4 cut-out corners and open it up so that the side seams are aligned RS together, in the centre. Stitch the open edges together. Do this for the other three corners.



23. Ensure your zip is still partly opened. Using your old pair of scissors, trim the zip ends(s), so that they are in line with your fabric edges.



24. Gently pull the whole creation through the hole you have left in the lining. Push out and press the boxed bottom corners



25. Push the lining back into the bag.



26. Sew up the hole in the lining, either by hand or using your sewing machine, tucking in the seam allowance.



The bag can be made bigger or smaller simply by adjusting the sizes when you cut your fabric, and could be made in one outer fabric if you prefer – just cut your outer fabric pieces to measure 27cm x 32cm. If you prefer, you can use iron-on fusible fleece instead of iron-on interfacing, which will make your bag more padded and give it a little extra body and stability. You can find a suitable fusible fleece [here](#).



And that's it! All that's left now is to fill your hand-crafted pouch with your crafty bits and pieces, or whatever you choose!

This is our first pattern from The Craft Room at Wool Warehouse – subscribe to our blog [here](#) to find more inspiration and more patterns in the future! If you require any help with this pattern, please email

thecraftroom@woolwarehouse.co.uk